



FTP Connections to the CSA

Overview

This application note describes how to use FTP to transfer files to and from the CSA to a Windows-based PC.

Summary

FTP, or File Transfer Protocol, allows files to be moved easily from one computer to another over the internet.

Note that with some versions of the CSA, after establishing an FTP session, you may need to perform the command "cd c:" to access the CSA harddrive.

Using FTP with Windows® NT/2000/XP

Network Connection to the CSA

1. Ensure that you have a valid IP address on the network adapter that you are connecting to the CSA. This can be done by opening the command prompt (available by typing "command" from the Run Menu), and then typing "ipconfig /all" once the prompt appears. IPs are listed next to "IP Address" for each adapter, valid IPs do **NOT** start with 127 or 196. If your address is not valid, then you must act as if you were never on the network (see below).
2. If you are usually on the network but have temporarily disconnected in order to connect to the CSA you must act as if you were never on the network (see below).

Direct Connection to the CSA

1. Open Start Menu | Settings | Network and Dial-Up Connections (or equivalent) and use "Make a New Connection" (or equivalent) to create a new connection if necessary. Otherwise, right click on an existing connection and click properties.

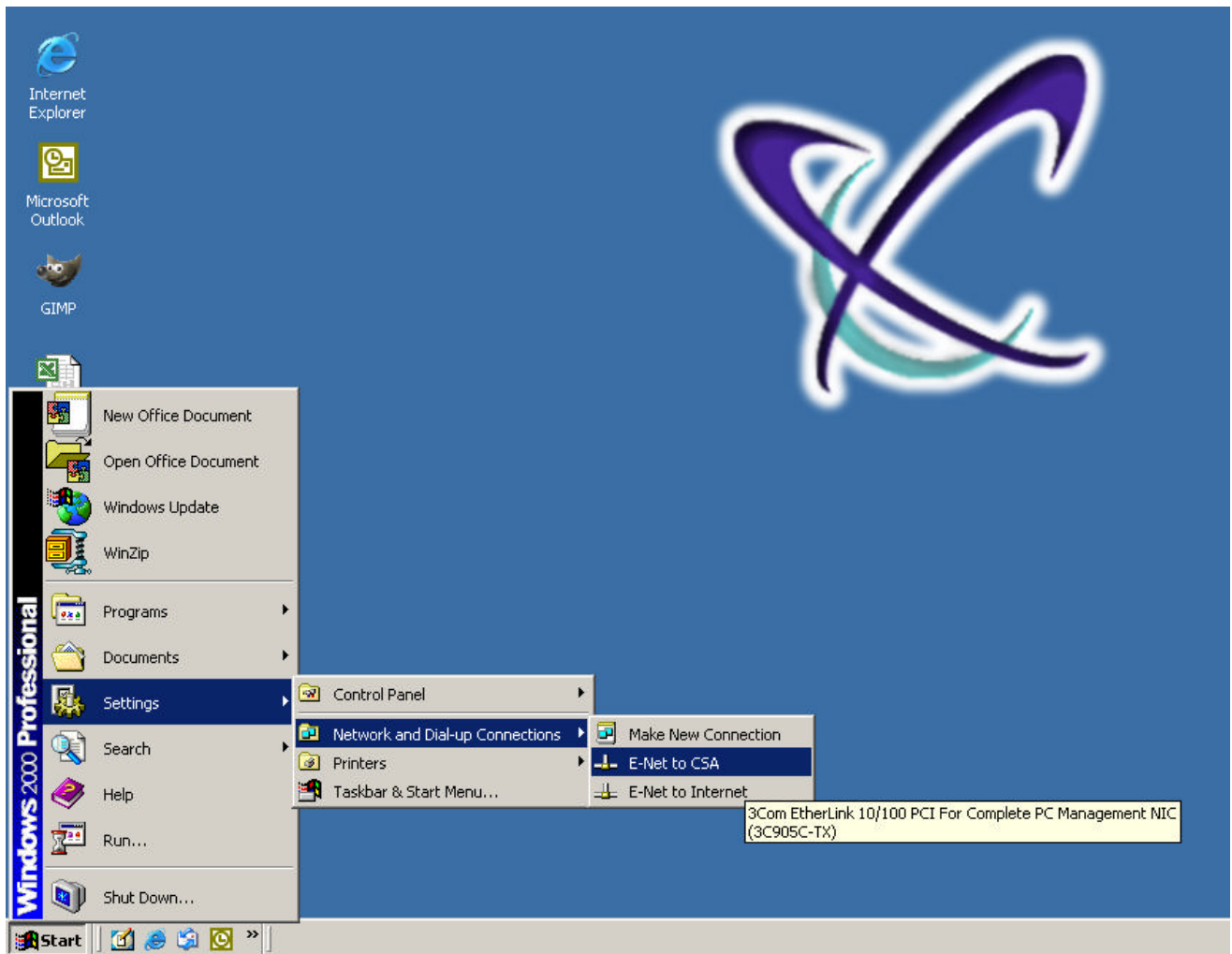
Creating a New Connection

To connect to the CSA you must use the appropriate network connection that is attached to the CSA. If the CSA is on a remote network then it may be necessary to create a new connection by following the "Make a New Connection" wizard. Otherwise, you must use the connection that is associated with the network interface card (NIC) that is connected directly or indirectly to the CSA.

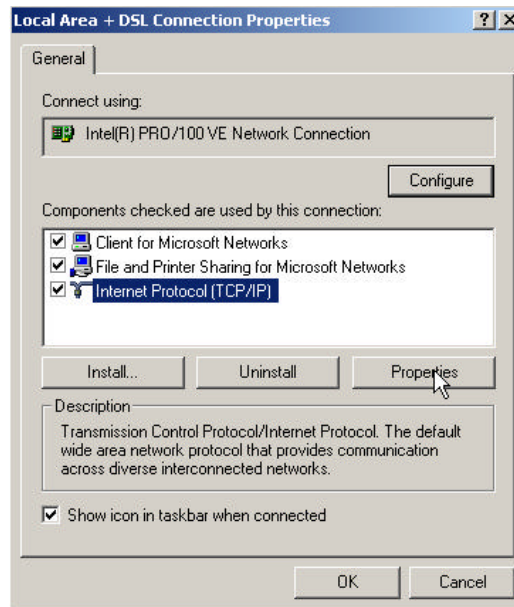
Computers with Multiple Network Interface Cards

In a multiple NIC system it may be necessary to determine which card is connected to the CSA. It is possible to determine the connection your CSA is connected to by finding the manufacturer model on your NIC card and matching it to the model displayed when you hold your mouse over connections in the Network and Dial-up Connections menu. Once you have determined your connection to the CSA, it is sometimes convenient to rename your connection so that you will remember which device to which you are connected. This may be done by right clicking on the

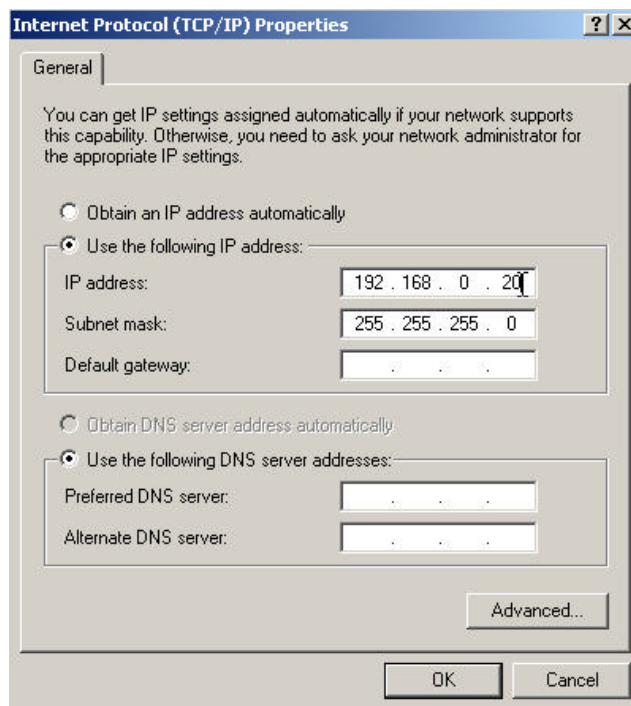
connection and selecting "Rename" from the menu. The example below shows a connection to a 3Com EtherLink card that has been renamed to be "E-Net to CSA" so that the operator can distinguish between the connection to the CSA and the connection to the Internet.



2. Click on "Internet Protocol (TCP/IP)" for your network adapter, and click properties.



3. Select "Use the following IP address:"
4. Set your IP to anything except a number starting with 127 or 196, and **NOT** 192.168.0.222. It is recommended that you choose a range between 192.168.0.1 and 192.168.0.255 excluding 192.168.0.222.



5. You do not need to restart your computer, even if Windows® tells you that you need to restart. This is because the Windows NT® kernel supports automatic network setting updates (the Windows NT® kernel is not only for Windows NT®, but also for Windows 2000® and Windows XP®).

Using FTP with Windows® 9x

Network Connection to the CSA

1. Ensure that you have a valid IP by opening “winipcfg” from the Run Menu, valid IPs do **NOT** start with 127 or 196. If your IP address is not valid and you are using DHCP to obtain a network address you must release and renew your network address in order to obtain a valid address. If your address is not valid and you are using a static address, then you must act as if you were never on the network (see below).
2. If you are usually on the network but have temporarily disconnected in order to connect to the CSA you must also check “winipcfg” to ensure that your IP does not start with 127 or 196. If your address is not valid and you use DHCP on your network then you must reconnect to the network and use “winipcfg” to release and renew your address before connecting to the CSA. If your address is not valid and you are using a static address, then you must act as if you were never on the network (see below).

Direct Connection to the CSA

1. Open Start Menu | Settings | Control Panel and open the “Network” control panel. Install “Client for Microsoft Networks”, a network adapter, and the TCP/IP Protocol if necessary.
2. Click on the TCP/IP Protocol for your network adapter, and click properties.
3. Set your IP to anything except a number starting with 127 or 196, and **NOT** 192.168.0.222. It is recommended that you choose a range between 192.168.0.1 and 192.168.0.255 excluding 192.168.0.222.
4. Restart your computer, unless you already had the necessary network adapters, protocols, and a valid IP address.

Notes:

- ✓ If you are switching a network connection for use by the CSA (the CSA is not on the network), then you must remove any Gateway, DNS server, or WINS server addresses before attempting to connect.

© 2001, 2002, 2003 dBm Optics, Inc.



dBm Optics, Inc.
300 South Public Road
Lafayette, CO 80026